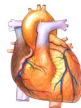


# Advanced Cardiac Life Support



## Course Format

All courses require advance preparation!!

*The following course options are available:*

## Provider

The classes are one or two consecutive days with written and practical testing at the end of the class. This option is for those taking the class for the first time and for those who do not use these techniques on a regular basis.

## Instructor

ACLS is a two and a half day instructor course. BLS is a one day instructor course. These options are for those identified as having instructor potential during a provider course, and recommended by faculty.

## Audit

Interested individuals may audit (except testing portion) a provider class by calling (605) 720-7117 and obtaining approval from the AHA Administrative Assistant. To audit, the fee is \$20. Limited space available.

## 2010 Course Schedule

### ACLS Provider

February 18 & 19 - HEDS  
 March 25 & 26 - HEDS  
 April 29 & 30 - Hot Springs  
 August 19 & 20 - HEDS  
 October 21 & 22 - HEDS  
 November 18 & 19 - Hot Springs

### \*ACLS Recertification (12:30pm)

January 22 (PM) - HEDS  
 May 14 (PM) - HEDS  
 September 17 (PM) - HEDS  
 November 5 (PM) - HEDS

### ACLS Instructor

February 17, 18 & 19 - HEDS  
 October 20, 21 & 22 - HEDS

### ACLS Experienced Provider Course 7:30-5:00

July 19 - HEDS An ACLS EP provider course can count for an ACLS  
 August 23 HEDS Recert course.

### PALS Provider

May 6 & 7 - HEDS  
 December 2 & 3 HEDS

### PALS Instructor

May 6, 7 & 8 -HEDS

### BLS Instructor

June 21 - HEDS 8:00-12:00  
 September 27 - HEDS 8:00-12:00

### BLS Healthcare Provider

February 22 - HEDS 1:00-5:00  
 March 29 - HEDS 1:00-5:00  
 June 7 - HEDS 1:00-5:00  
 June 21 - HEDS 1:00-5:00  
 September 27 - HEDS 1:00-5:00

### ECG & Pharmacology

November 16 - HEDS 8am- 3pm

\*We offer other types of classes through HEDS. Check out our website for dates and times at [www.heds.org](http://www.heds.org)

## Eligibility Requirements

These courses are designed for healthcare professionals whose occupations require a working knowledge in the discipline they are using. Other interested individuals may be eligible **with approval from the course director**.

- All participants must present a current HCP card for all courses except BLS Provider. They must be approved by this Training Center at registration before they will be allowed to take the Course. **NO EXCEPTIONS.**
- The **ACLS Recertification and EP** are open to those who have completed the ACLS provider course within the last two (2) years, use ACLS on a regular basis and are currently certified in AHA-BLS (HCP).
- The **ACLS Instructor** course is open to those who have successfully completed the ACLS Provider/Recertification course at the "Instructor Potential" level, or have a letter of recommendation from a current ACLS instructor, and have completed the Core Instructor course.
- The **BLS Instructor** course is open to those who have successfully completed the BLS Healthcare Provider (HCP) course, and the Core Instructor course.
- **Core Instructor Certificate** must be received prior to instructor course material being sent out.

## Cancellations

Every effort is made to hold classes as scheduled, however, HEDS reserves the right to cancel classes due to circumstances beyond our control, including weather, disaster, damage to classrooms or equipment, illness/injury of faculty or other circumstances beyond our control. We reserve the right to relocate and reschedule classes as necessary. In the event of cancellation we will make every effort to reach you prior to the date of class. You may request to be placed in an alternate class, or request a refund of any tuition paid.

## Accreditation

These programs are accredited by the American Heart Association and contact hours are awarded by Health Education Development System, Inc.

Provider Course	16 Hours
EP Provider Course	9 Hours
Recertification Course	4 Hours
ACLS & BLS Instructor Course	4 Hours
BLS Provider	4 Hours
ECG & Pharmacology	7 Hours

## Sponsorship

These courses are sponsored by Health Education Development System, Inc. and VA Black Hills Health Care Systems

## For Registration, Payment & Information

Health Education Development System, Inc.  
 Attn: ACLS Administrative Assistant  
 PO Box 187  
 Fort Meade, SD 57741 (605) 720-7117 (605) 720-7119 Fax

## Registration Information and Fees

### ACLS & PALS Provider Course

\$70 HEDS Members \$140 Non-Members  
 Class size limited to 15 participants

### ACLS & PALS Recertification Course\*

\$54 HEDS Members \$104 Non-Members  
 Class size is limited 15 participants

### Heart Code Skills Recertification (Skills testing only)

\$25 HEDS Members \$45 Non-Members

### ACLS Instructor Course

\$70 HEDS Members \$140 Non-Members  
 Class size limited to 5 participants

### BLS Healthcare Provider Course

\$35 HEDS Members \$70 Non-Members  
 Class size limited to 15 participants

### BLS Instructor Course

\$54 HEDS Members \$94 Non-members  
 Class size limited to 5 participants

### ECG & Pharmacology and ACLS EP

\$94 HEDS Members \$184 Non-members  
 Class size limited to 30 & 15 participants respectively

**Fees Include:** Tuition and card for provider, recertification, or instructor course.

**Books:** Registration fee does not include text books. Course books may be ordered online at [www.heds.org](http://www.heds.org).

**Refund Policy:** Deadline for withdrawal is two weeks prior to the start of each course. No refund will be issued after that deadline. ***If materials have been mailed \$35 will be deducted from your refund.***

**Course Materials:** Can be downloaded from [www.heds.org](http://www.heds.org)

**How to Register:** Written preregistration with payment is required a minimum of eight weeks before the course date. **Phone registration will be accepted only with credit card payment.** Everyone must preregister.

**Preregister early,  
 Classes fill up quickly!**

**Registration Form (Please Print Clearly)**

Name \_\_\_\_\_

Address \_\_\_\_\_

City \_\_\_\_\_ State \_\_\_\_\_ Zip \_\_\_\_\_

Last Four Digits of Social Security Number \_\_\_\_\_

Phone (H) \_\_\_\_\_ (W) \_\_\_\_\_

Profession: \_\_\_\_ RN \_\_\_\_ MD \_\_\_\_ LPN \_\_\_\_\_ Other (Specialty)

Employer \_\_\_\_\_

MasterCard/ Visa #: \_\_\_\_\_ Expiration \_\_\_\_\_

Indicate your first choice with a "1" Indicate your second choice with a "2"  
Confirmation notice will be sent within 2 weeks of receipt of registration  
and payment.

**2010  
HEDS Course Schedule**

**ACLS Provider Course**

- \_\_\_\_ February 18 & 19 - HEDS
- \_\_\_\_ March 25 & 26 - HEDS
- \_\_\_\_ April 29 & 30 - Hot Springs
- \_\_\_\_ August 19 & 20 - HEDS
- \_\_\_\_ October 21 & 22 - HEDS
- \_\_\_\_ November 18 & 19 - Hot Springs

**ACLS Recertification Course**

- \_\_\_\_ January 22 - HEDS
- \_\_\_\_ May 14 - HEDS
- \_\_\_\_ September 17 - HEDS
- \_\_\_\_ November 5 - HEDS

**ACLS Experienced Provider Course**

- \_\_\_\_ July 19 - HEDS
- \_\_\_\_ August 23 - HEDS

**ACLS Instructor Course**

- \_\_\_\_ Feb. 17, 18 & 19 - HEDS
- \_\_\_\_ Oct. 20, 21 & 22 - HEDS

**PALS Provider Course**

- \_\_\_\_ May 6 & 7 - HEDS
- \_\_\_\_ December 2 & 3 - HEDS

**BLS Instructor Course**

- \_\_\_\_ June 21 - HEDS 8:00– 12:00
- \_\_\_\_ Sept. 27 - HEDS 8:00–12:00

**BLS Provider Course**

- \_\_\_\_ Feb. 22 - HEDS 1:00-5:00
- \_\_\_\_ March 29 - HEDS 1:00-5:00
- \_\_\_\_ June 7 - HEDS 1:00-5:00
- \_\_\_\_ June 21 - HEDS 1:00-5:00
- \_\_\_\_ Sept. 27 - HEDS 1:00-5:00

**ECG & Pharmacology**

- \_\_\_\_ November 16 – HEDS 8am–3pm

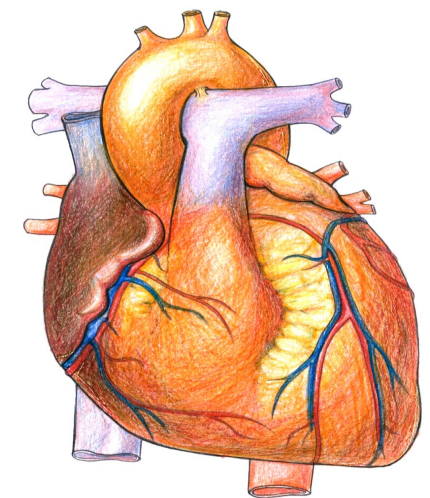


Fax or mail to:  
Health Education Development System, Inc.  
PO Box 187  
Fort Meade, SD 57741  
Fax: (605) 720-7119



Department of Veterans Affairs Medical Center  
HEDS  
EES Fort Meade Center  
VAMC/CHEP, Building 90  
Fort Meade, South Dakota 57741  
Official Business  
Penalty for private use, \$300  
Return After Five Days

**2010  
Course Schedule  
American  
Heart  
Association**



*Sponsored by*  
Health Education Development System (HEDS)  
Mountain Plains Health Consortium (MPHC)